



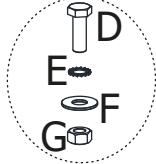
# MANUAL DE INSTALACIÓN

## Sistema de Enganche Reforzado ST5 SE102

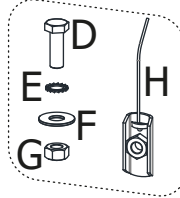
Mitsubishi L200 Nafta 2016 +  
Uruguay | Bolivia

### 1 CONTENIDO

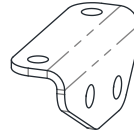
**BSE001**  
M12P1.75  
x35mm



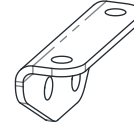
**BSE099**



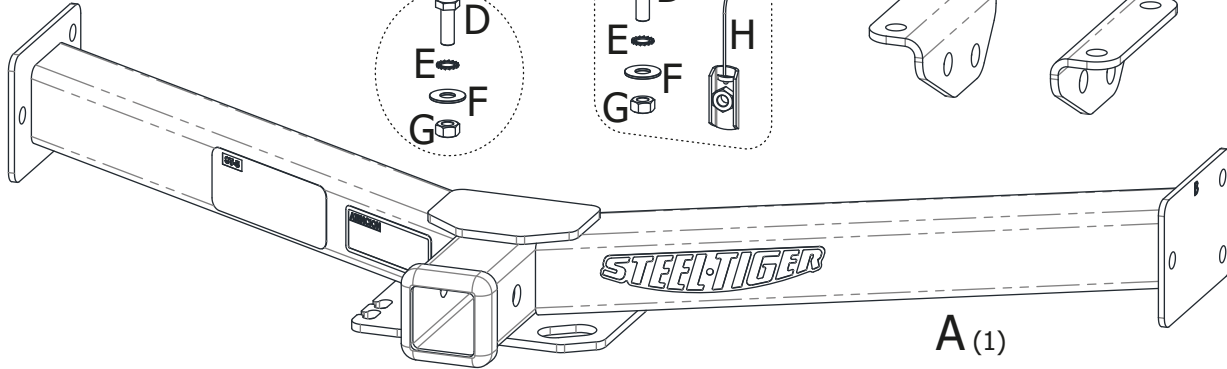
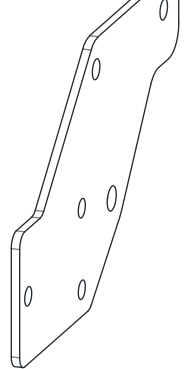
**C1 (1)**



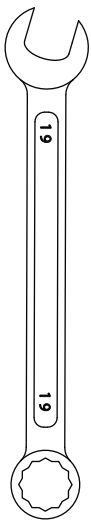
**C2 (1)**



**B (2)**

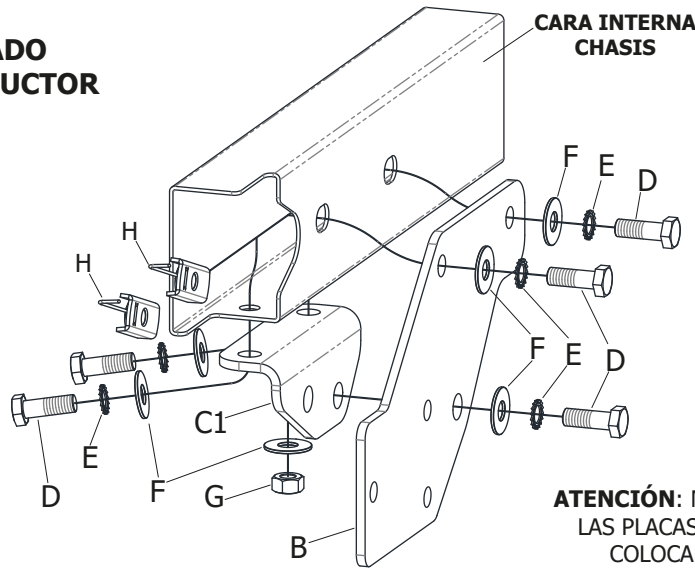


### 2 HERRAMIENTAS NECESARIAS



### 3 COLOCACIÓN DE PIEZAS "B", "C1" Y "C2"

LADO CONDUCTOR

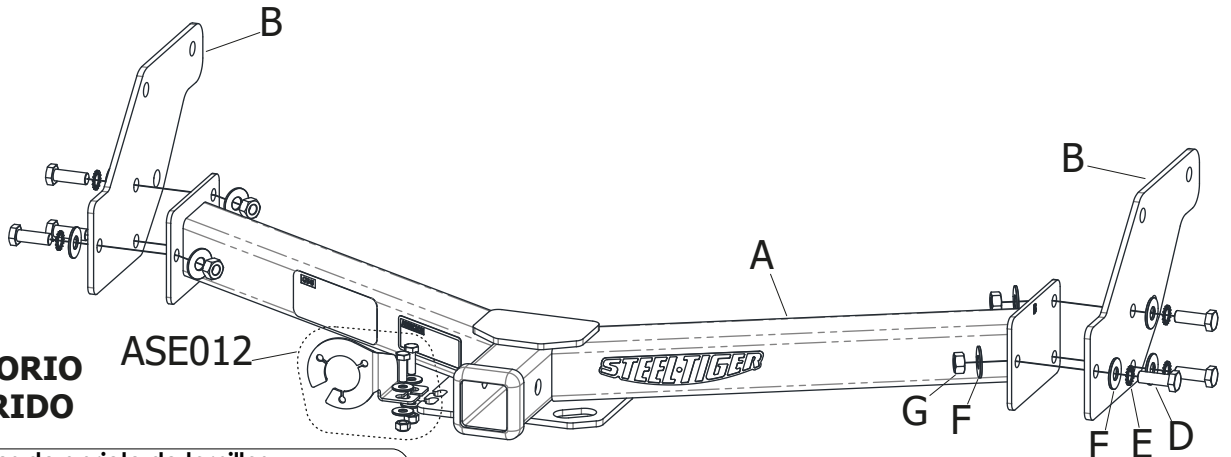


**ATENCIÓN:** NO AJUSTAR TOTALMENTE LAS PLACAS "B", "C1" Y "C2" HASTA COLOCAR EL TRAVESAÑO "A"

### 4 COLOCACIÓN DE PIEZA "A"

ACCESORIO SUGERIDO

ASE012



#### Valores de apriete de tornillos

Unidades	M4	M6	M8	M10	M12	M14
Kg.m	0,3	1	2,5	5,1	8,7	14

Coefficiente de fricción:  $\mu=0,14$